

EX. 1 - RTU 26 Multi-Purpose Room



EX. 2 - RTU 27 Music Complex (North Music Room)



EX. 3 - RTU 28 Music Complex (Choir Room)



EX. 4 - RTU 29 Music Complex (Band Room)



Date

02/10/2022

Project Name

Pleasant Hill Phase 2

Project Number**Client / Purchaser****EX. 5 - Replacement Unit Specifications****Submittal Summary Page**

Qty	Tag #	Model # / Material #	Description
1	RTU-26	ZS-20S30U4B1ACA2A1	20 Ton, Single Packaged R-410A Air Conditioner, Two Stage Cooling, 9.8 EER, 300 MBH Input Stainless Steel, Two Stage Gas Heat, 460-3-60, Single Wall Construction <ul style="list-style-type: none"> • VFD with Bypass and Intellispeed • Dry Bulb Low Leak Economizer w/Barometric Relief and Hoods (Bottom Return Only) with Economizer Fault Detection & Diagnostic (Meets ASHRAE 90.1-2013, IECC 2015, California Title 24, AMCA 511) • 7.5 HP High Static Belt Drive Blower • 2" Pleated Filters (MERV 8) • Smart Equipment Controller including Discharge Air, Return Air, and Outdoor Air Temperature Sensors. BACNet MS/TP, Modbus and N2 Communication Card. • Standard Condenser Coil • Standard Evaporator Coil • Standard Access Doors • Galvanized Steel Drain Pan
1	RTU-26	ZW-20S30U4B1ACA2A1	20 Ton, Single Packaged R-410A Air Conditioner, Four Stage Cooling, 11.0 EER, 300 MBH Input Stainless Steel, Two Stage Gas Heat, 460-3-60, Single Wall Construction <ul style="list-style-type: none"> • VFD with Bypass and Intellispeed • Dry Bulb Low Leak Economizer w/Barometric Relief and Hoods (Bottom Return Only) with Economizer Fault Detection & Diagnostic (Meets ASHRAE 90.1-2013, IECC 2015, California Title 24, AMCA 511) • 7.5 HP High Static Belt Drive Blower • 2" Pleated Filters (MERV 8) • Smart Equipment Controller including Discharge Air, Return Air, and Outdoor Air Temperature Sensors. BACNet MS/TP, Modbus and N2 Communication Card. • Standard Condenser Coil • Standard Evaporator Coil • Standard Access Doors • Galvanized Steel Drain Pan

Equipment start-up and commissioning by a factory trained technician is recommended.
Contact your supplying distributor or sales representative for additional information & guidance.



WARNING: Cancer and Reproductive Harm - www.P65Warnings.ca.gov

Project Name: **Pleasant Hill Phase 2**

 Unit Model #: **ZS-20S30U4B1ACA2A1**

 Quantity: **1** Tag #: **RTU-26**

 System: **ZS-20S30U4B1ACA2A1**

Cooling Performance

Total gross capacity	260.4 MBH
Sensible gross capacity	189.3 MBH
Total net capacity	240.9 MBH
Sensible net capacity	169.8 MBH
Efficiency (at ARI)	9.80 EER
Integrated eff. (at ARI)	12.30 IEER
Ambient DB temp.	95.0 °F
Entering DB temp.	80.0 °F
Entering WB temp.	67.0 °F
Leaving DB temp.	58.1 °F
Leaving WB temp.	56.7 °F
Leaving air temp dew point	55.80 °F
Power input (w/o blower)	22.57 kW
Sound power	92 dB(A)

Refrigerant

Refrigerant type	R-410A
Sys1	22 lbs
Sys2	23 lbs 8 oz

Gas Heating Performance

Entering DB temp.	65 °F
Heating output capacity (Max)	240 MBH
Supply air	8000 CFM
Heating input capacity (Max)	300 MBH
Leaving DB temp.	92.8 °F
Air temp. rise	27.8 °F
SSE	80.0 %
Stages	2

Supply Air Blower Performance

Supply air	8000 CFM
Ext. static pressure	1.0 IWG
Addl. Unit Losses (Options/Accessories)	0.15 IWG
Blower speed	1023 RPM
Max BHP of Motor (including service factor)	8.63 HP
Duct location	Bottom
Motor rating	7.50 HP
Actual required BHP	6.83 HP
Power input	5.72 kW
Elevation	0 ft.
Drive type	BELT

Electrical Data

Power supply	460-3-60
Unit min circuit ampacity	54.3 Amps
Unit max over-current protection	70 Amps

Dimensions & Weight

Hgt	53 in.	Len	137 in.	Wth	92 in.
Weight with factory installed options	2933 lbs.				

Clearances

Right	36 in.	Front	36 in.	Rear	49 in.
Top	72 in.	Bottom	0 in.	Left	24 in.

Note: Please refer to the tech guide for listed maximum static pressures



20 Ton

- Fraser-Johnston Units are Manufactured at an ISO 9001 Registered Facility and each Rooftop is Completely Computer-Run Tested Prior to Shipment.

Unit Features

- Two Stage Cooling
- 300 MBH Input Stainless Steel, Two Stage Gas Heat
- Unit Cabinet Constructed of Powder Painted Steel, Certified At 750 Hours Salt Spray Test (ASTM B-117 Standards).
- Either Supply and/or Return can be Field Converted from Vertical to Horizontal Configuration without Cutting Panels
- Full Perimeter Base Rails with Built in Rigging Capabilities
- Dual Refrigerant Circuits for Efficient Part Load Operation with Scroll Compressors
- Dry Bulb Low Leak Economizer w/Barometric Relief and Hoods (Bottom Return Only) with Economizer Fault Detection & Diagnostic (Meets ASHRAE 90.1-2013, IECC 2015, California Title 24, AMCA 511)
- 7.5 HP High Static Belt Drive Blower
- 2" Pleated Filters (MERV 8)
- Solid Core Liquid Line Filter Driers
- Replacement Filters: For 2" filters 12 - (12" x 24" x 2") OR For 4" filters 2 - (20" X 24" x 4") AND 4 - (24" X 24" x 4")
- Short Circuit Current: 5kA RMS Symmetrical
- Single Point Power Connection
- Through-the-Curb and Through-The-Base Utility Connections
- Standard Condenser Coil
- Standard Evaporator Coil
- Crane Required to Unload Unit
- Galvanized Steel Drain Pan
- Standard Access Doors

BAS Controller

- VFD with Bypass and Intellispeed
- Smart Equipment Controller including Discharge Air, Return Air, and Outdoor Air Temperature Sensors. BACNet MS/TP, Modbus and N2 communication card.

Standard Unit Controller: Smart Equipment Control Board

- An Integrated Low-Ambient Control, Anti-Short Cycle Protection, Lead-Lag, Fan On and Fan off Delays, Low Voltage Protection, On-Board Diagnostic and Fault Code Display. Allows all units to operate in the cooling mode down to 0 °F outdoor ambient without additional components or intervention.
- Safety Monitoring - Monitors the High and Low-Pressure Switches, the Freezestats, the Gas Valve, if Applicable, and the Temperature Limit Switch on Gas and Electric Heat Units. The Unit Control Board will Alarm on Ignition Failures, Safety Lockouts and Repeated Limit Switch Trips.

Warranty

- One (1) Year Limited Warranty on the Complete Unit
- Five (5) Year Warranty - Compressors and Electric Heater Elements
- Fifteen (15) Year Warranty - Stainless Steel Tubular Heat Exchangers



ReliaPlus™ 100 15-25 Ton Package

Fraser-Johnston Single Package R-410A Air
Conditioner

Project Name: **Pleasant Hill Phase 2**

Unit Model #: **ZS-20S30U4B1ACA2A1**

Quantity: **1** Tag #: **RTU-26**

System: **ZS-20S30U4B1ACA2A1**

Additional Electrical Data

Power supply	460-3-60
Unit min circuit ampacity	54.3 Amps
Unit max over-current protection	70 Amps
Min Voltage	432 V
Max Voltage	504 V
Comp #1 RLA	17.9
Comp #1 LRA	125
Comp #2 RLA	17.9
Comp #2 LRA	125
Indoor Mtr Voltage	460-3-60
Indoor Mtr FLA	9.7
Outdoor Mtr Qty	2
Outdoor Fan Voltage	460-3-60
OD Fan Mtr FLA (ea.)	2.2
Power Ex Mtr Qty	1
Powered Ex Voltage	460-1-60
Power Ex Mtr FLA (ea)	2.2
Combustion Mtr Qty	1
Combustion Motor Voltage	460-1-60
Combustion Mtr FLA (ea)	0.3

ReliaPlus™ 100 15-25 Ton Package

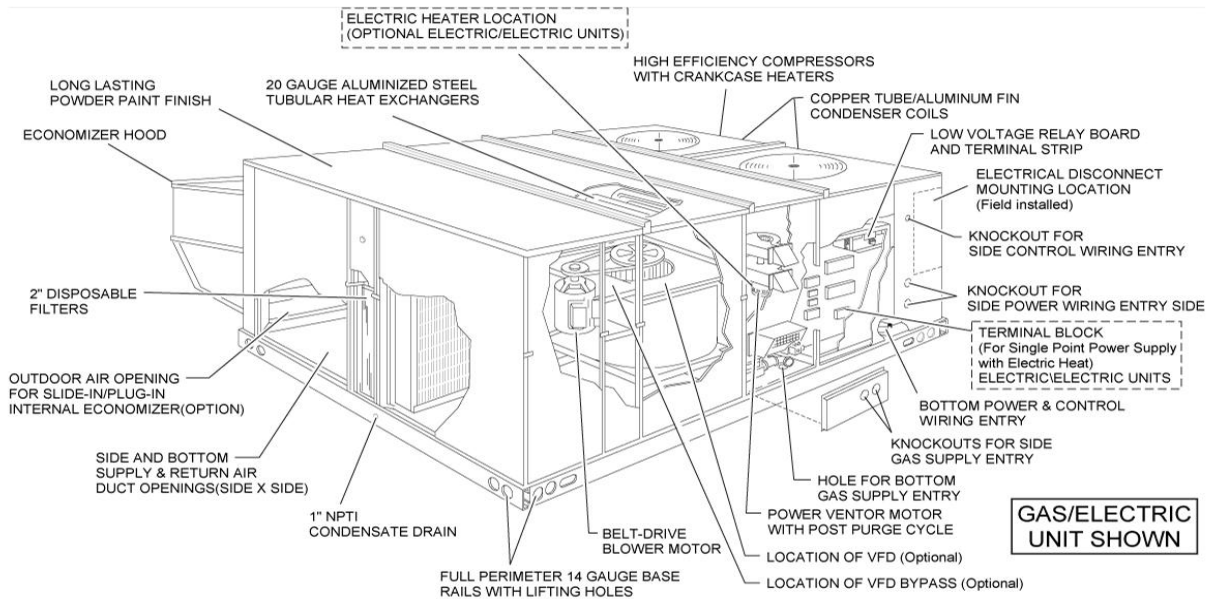
Fraser-Johnston Single Package R-410A Air
Conditioner

Project Name: **Pleasant Hill Phase 2**

Unit Model #: **ZS-20S30U4B1ACA2A1**

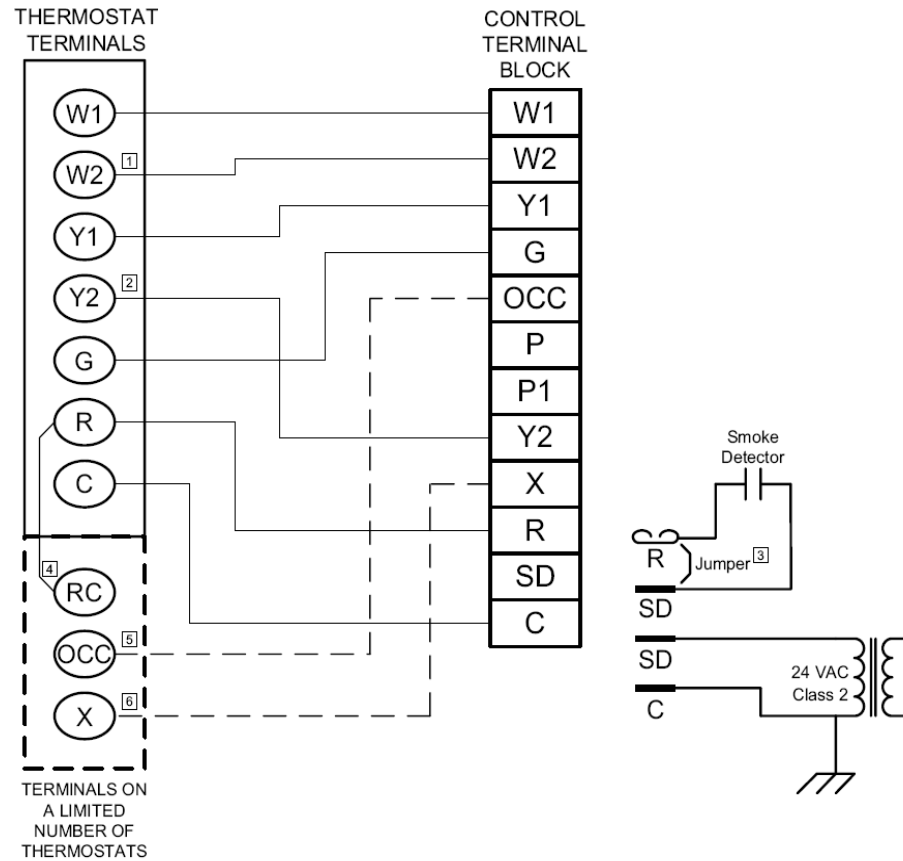
Quantity: 1 Tag #: **RTU-26**

Component Locations



Typical Control Diagram

Typical Control Diagram



- [1] Second stage heating not required on single stage heating units.
- [2] Second stage cooling not required on single stage cooling units.
- [3] Jumper is required if there is no Smoke Detector circuit.
- [4] Jumper is required for any combination of R, RC, or RH.
- [5] OCC is an output from the thermostat to indicate the Occupied condition.
- [6] X is an input to the thermostat to display Error Status conditions.

Date

02/10/2022

Project Name

Pleasant Hill Phase 2

Project Number**Client / Purchaser**

Submittal Summary Page

Qty	Tag #	Model # / Material #	Description
11	RTU- 1,2,3,4,5,6,1 1,12,13,17,2 0	ZE036J05B4C1ACA2B2	3 Ton, Single Packaged R-410A Air Conditioner, Single Stage Cooling, 12.0 EER / 14.0 SEER, Single Stage Gas Stainless Steel, 50 MBH Input, 460-3-60 <ul style="list-style-type: none"> • Dry Bulb Economizer and Hood (No Barometric Relief Damper) with Economizer Fault Detection & Diagnostic (Meets ASHRAE 90.1-2013, IECC 2015, California Title 24, AMCA 511) • 1.5 HP Standard Static Belt Drive Blower • 2" Pleated Filters (MERV 8) • Smart Equipment Controller including Discharge Air, Return Air, and Outdoor Air Temperature Sensors. BACNet MS/TP, Modbus and N2 Communication Card. • Microchannel All Aluminum Condenser Coil, Copper tube/Aluminum fin Evaporator Coil • Galvanized Steel Drain Pan • Hinged & Tool Free Filter, Motor, and Electrical Access Panels
11	RTU- 1,2,3,4,5,6,1 1,12,13,17,2 0	1RD0410	Barometric Relief Damper with Hood Kit (Downflow Unit or Duct Mounted)
1	RTU-7	ZE072J10D4C1ACA2B1	6 Ton, Single Packaged R-410A Air Conditioner, Two Stage Cooling / Intellispeed w/VFD Standard, 11.00 EER, Single Stage Gas Stainless Steel, 100 MBH Input, 460-3-60 <ul style="list-style-type: none"> • Dry Bulb Economizer and Hood (No Barometric Relief Damper) with Economizer Fault Detection & Diagnostic (Meets ASHRAE 90.1-2013, IECC 2015, California Title 24, AMCA 511) • 3 HP High Static Belt Drive Blower • 2" Pleated Filters (MERV 8) • Smart Equipment Controller including Discharge Air, Return Air, and Outdoor Air Temperature Sensors. BACNet MS/TP, Modbus and N2 Communication Card. • Microchannel All Aluminum Condenser Coil, Copper tube/Aluminum fin Evaporator Coil • Galvanized Steel Drain Pan • Hinged & Tool Free Filter, Motor, and Electrical Access Panels
1	RTU-7	1RD0410	Barometric Relief Damper with Hood Kit (Downflow Unit or Duct Mounted)
10	RTU- 8,9,10,15,18, 21,22,23,27, 28	ZE048J07B4C1ACA2B2	4 Ton, Single Packaged R-410A Air Conditioner, Single Stage Cooling, 12.0 EER / 14.0 SEER, Single Stage Gas Stainless Steel, 75 MBH Input, 460-3-60 <ul style="list-style-type: none"> • Dry Bulb Economizer and Hood (No Barometric Relief Damper) with Economizer Fault Detection & Diagnostic (Meets ASHRAE

Qty	Tag #	Model # / Material #	Description
			90.1-2013, IECC 2015, California Title 24, AMCA 511) • 1.5 HP Standard Static Belt Drive Blower • 2" Pleated Filters (MERV 8) • Smart Equipment Controller including Discharge Air, Return Air, and Outdoor Air Temperature Sensors. BACNet MS/TP, Modbus and N2 Communication Card. • Microchannel All Aluminum Condenser Coil, Copper tube/Aluminum fin Evaporator Coil • Galvanized Steel Drain Pan • Hinged & Tool Free Filter, Motor, and Electrical Access Panels
10	RTU-8,9,10,15,18,21,22,23,27,28	1RD0410	Barometric Relief Damper with Hood Kit (Downflow Unit or Duct Mounted)
5	RTU-14,16,24,25,29	ZE060J10B4C1ACA2B2	5 Ton, Single Packaged R-410A Air Conditioner, Single Stage Cooling, 11.8 EER / 14.0 SEER, Single Stage Gas Stainless Steel, 100 MBH Input, 460-3-60 • Dry Bulb Economizer and Hood (No Barometric Relief Damper) with Economizer Fault Detection & Diagnostic (Meets ASHRAE 90.1-2013, IECC 2015, California Title 24, AMCA 511) • 1.5 HP Standard Static Belt Drive Blower • 2" Pleated Filters (MERV 8) • Smart Equipment Controller including Discharge Air, Return Air, and Outdoor Air Temperature Sensors. BACNet MS/TP, Modbus and N2 Communication Card. • Microchannel All Aluminum Condenser Coil, Copper tube/Aluminum fin Evaporator Coil • Galvanized Steel Drain Pan • Hinged & Tool Free Filter, Motor, and Electrical Access Panels
5	RTU-14,16,	1RD0410	Barometric Relief Damper with Hood Kit (Downflow Unit or Duct Mounted)

Equipment start-up and commissioning by a factory trained technician is recommended.
Contact your supplying distributor or sales representative for additional information & guidance.



WARNING: Cancer and Reproductive Harm - www.P65Warnings.ca.gov

Project Name: **Pleasant Hill Phase 2**

 Unit Model #: **ZE048J07B4C1ACA2B2**

 Quantity: **10** Tag #: **RTU-8,9,10,15,18,21,22,23,27,28**

 System: **ZE048J07B4C1ACA2B2**

Cooling Performance

Total gross capacity	50.8 MBH
Sensible gross capacity	36.7 MBH
Total net capacity	48.1 MBH
Sensible net capacity	34.0 MBH
Seasonal Efficiency (at ARI)	14.00 SEER
Efficiency (at ARI)	12.00 EER
Ambient DB temp.	95.0 °F
Entering DB temp.	80.0 °F
Entering WB temp.	67.0 °F
Leaving DB temp.	58.8 °F
Leaving WB temp.	56.9 °F
Leaving air temp dew point	55.70 °F
Power input (w/o blower)	3.49 kW
Sound power	80 dB(A)

Refrigerant

Refrigerant type	R-410A
Sys1	5 lbs 6 oz

Gas Heating Performance

Entering DB temp.	65 °F
Heating output capacity (Max)	59 MBH
Supply air	1600 CFM
Heating input capacity (Max)	75 MBH
Leaving DB temp.	99.1 °F
Air temp. rise	34.1 °F
SSE	80.0 %
Stages	1

Supply Air Blower Performance

Supply air	1600 CFM
Ext. static pressure	0.75 IWG
Addl. Unit Losses (Options/Accessories)	0.11 IWG
Blower speed	1092 RPM
Max BHP of Motor (including service factor)	1.73 HP
Duct location	Bottom
Motor rating	1.50 HP
Actual required BHP	.87 HP
Power input	0.81 kW
Elevation	0 ft.
Drive type	BELT

Electrical Data

Power supply	460-3-60
Unit min circuit ampacity	11 Amps
Unit max over-current protection	15 Amps

Dimensions & Weight

Hgt	33 in.	Len	83 in.	Wth	45 in.
Weight with factory installed options	708 lbs.				

Clearances

Right	24 in.	Front	32 in.	Rear	12 in.
Top	72 in.	Bottom	0 in.	Left	24 in.

Note: Please refer to the tech guide for listed maximum static pressures



4 Ton

- Fraser-Johnston Units are Manufactured at an ISO 9001 Registered Facility and Each Rooftop is Completely Computer-Run Tested Prior to Shipment.

Unit Features

- Single Stage Cooling
- Single Stage Gas Stainless Steel
- 75 MBH Input
- Either Supply and/or Return can be Field Converted from Vertical to Horizontal Configuration without Cutting Panels.
- Full Perimeter Base Rails with Built in Rigging Capabilities
- Unit Cabinet Constructed of Powder Painted Steel, Certified At 750 Hours Salt Spray Test (ASTM B-117 Standards)
- Scroll Compressor
- Dry Bulb Economizer and Hood (No Barometric Relief Damper) with Economizer Fault Detection & Diagnostic (Meets ASHRAE 90.1-2013, IECC 2015, California Title 24, AMCA 511)
- 1.5 HP Standard Static Belt Drive Blower
- Solid Core Liquid Line Filter Driers
- 2" Pleated Filters (MERV 8)
- Replacement Filters: 2 - (15" x 20" x 1" or 2") and 1 - (14" x 25" x 1" or 2"). Unit accepts 1" or 2" wide filters.
- Short Circuit Current: 5kA RMS Symmetrical
- Through-the-Curb and Through-The-Base Utility Connections
- Single Point Power Connection
- Microchannel All Aluminum Condenser Coil, Copper tube/Aluminum fin Evaporator Coil
- Galvanized Steel Drain Pan
- Hinged & Tool Free Filter, Motor, and Electrical Access Panels

Standard Unit Controller: Smart Equipment Control Board

- Safety Monitoring - Monitors the High and Low-Pressure Switches, the Freezestats, the Gas Valve, if Applicable, and the Temperature Limit Switch on Gas and Electric Heat Units. The Unit Control Board will Alarm on Ignition Failures, Safety Lockouts and Repeated Limit Switch Trips.
- An Integrated Low-Ambient Control, Anti-Short Cycle Protection, Lead-Lag, Fan On and Fan off Delays, Low Voltage Protection, On-Board Diagnostic and Fault Code Display. Allows all units to operate in the cooling mode down to 0 °F outdoor ambient without additional components or intervention.

BAS Controller

- Smart Equipment Controller including Discharge Air, Return Air, and Outdoor Air Temperature Sensors. BACNet MS/TP, Modbus and N2 communication card.

Warranty

- One (1) Year Limited Warranty on the Complete Unit
- Five (5) Year Warranty - Compressors and Electric Heater Elements
- Fifteen (15) Year Warranty - Stainless Steel Heat Exchanger

Project Name: **Pleasant Hill Phase 2**

Unit Model #: **ZE048J07B4C1ACA2B2**

Quantity: **10** Tag #: **RTU-
8,9,10,15,18,21,22,23,27,28**

System: **ZE048J07B4C1ACA2B2**

Additional Electrical Data

Power supply	460-3-60
Unit min circuit ampacity	11 Amps
Unit max over-current protection	15 Amps
Min Voltage	432 V
Max Voltage	504 V
Comp #1 RLA	6.2
Comp #1 LRA	41.0
Indoor Mtr Voltage	460-3-60
Indoor Mtr FLA	2.1
Outdoor Mtr Qty	1
Outdoor Fan Voltage	460-1-60
OD Fan Mtr FLA (ea.)	1.1

Project Name: **Pleasant Hill Phase 2**

 Unit Model #: **ZE048J07B4C1ACA2B2**

 Quantity: **10** Tag #: **RTU-8,9,10,15,18,21,22,23,27,28**

 System: **ZE048J07B4C1ACA2B2**

Factory Installed Options

ZE048J07B4C1ACA2B2

Equipment Options	Option(s) Selected	
Product Category:	ZE	Single Packaged R-410A Air Conditioner 12.0 EER / 14.0 SEER
Nominal Cooling Capacity:	048	4 Ton Single Stage Cooling
Heat Type and Nominal Heat Capacity:	J07	Single Stage Gas Stainless Steel 75 MBH Input
Blower Option:	B	1.5 HP Standard Static Belt Drive Blower
Voltage:	4	460-3-60
Outside Air Option:	C	Dry Bulb Economizer and Hood (No Barometric Relief Damper) with Economizer Fault Detection & Diagnostic (Meets ASHRAE 90.1-2013, IECC 2015, California Title 24, AMCA 511)
Service Options:	1	
Sensor Options:	A	
Controls:	C	Smart Equipment Controller including Discharge Air, Return Air, and Outdoor Air Temperature Sensors. BACNet MS/TP, Modbus and N2 Communication Card.
Refrigeration:	A	Microchannel All Aluminum Condenser Coil, Copper tube/Aluminum fin Evaporator Coil
Additional Options:	2	2" Pleated Filters (MERV 8)
Cabinet Options:	B	Galvanized Steel Drain Pan Hinged & Tool Free Filter, Motor, and Electrical Access Panels

Field Installed Accessories

- ☐ 1BD0401 - Burglar Bars (25.0 lbs)
- ☐ 1CG0401 - Coil Guard (11.0 lbs)
- ☐ 1CV0402 - Concentric Diffuser, Flush Mount, 18RD
- ☐ 1CV0411 - Concentric Diffuser, Side Discharge, 18RD (55.0 lbs)
- ☐ 1CV0419 - Concentric Diffuser, Specialty, 18X18
- ☐ 1FE0405 - Flue Extension Kit (25.0 lbs)

- ☐ 1GP0401 - Gas Piping Kit for Bottom Gas Supply Connection with External Shut-Off (includes: Internal gas pipe, fittings, gas cock & panel gaskets) (5.0 lbs)
- ☐ 1HG0401 - Hail Guard Kit (51.0 lbs)
- ☐ 1LN0406 - Low NOx Kit - Required to reduce the emission of nitrogen oxides below 40 nanograms per joule.
- ☐ 1NP0440 - Natural Gas to Propane Conversion Kit (1-Stage) (1.0 lbs)

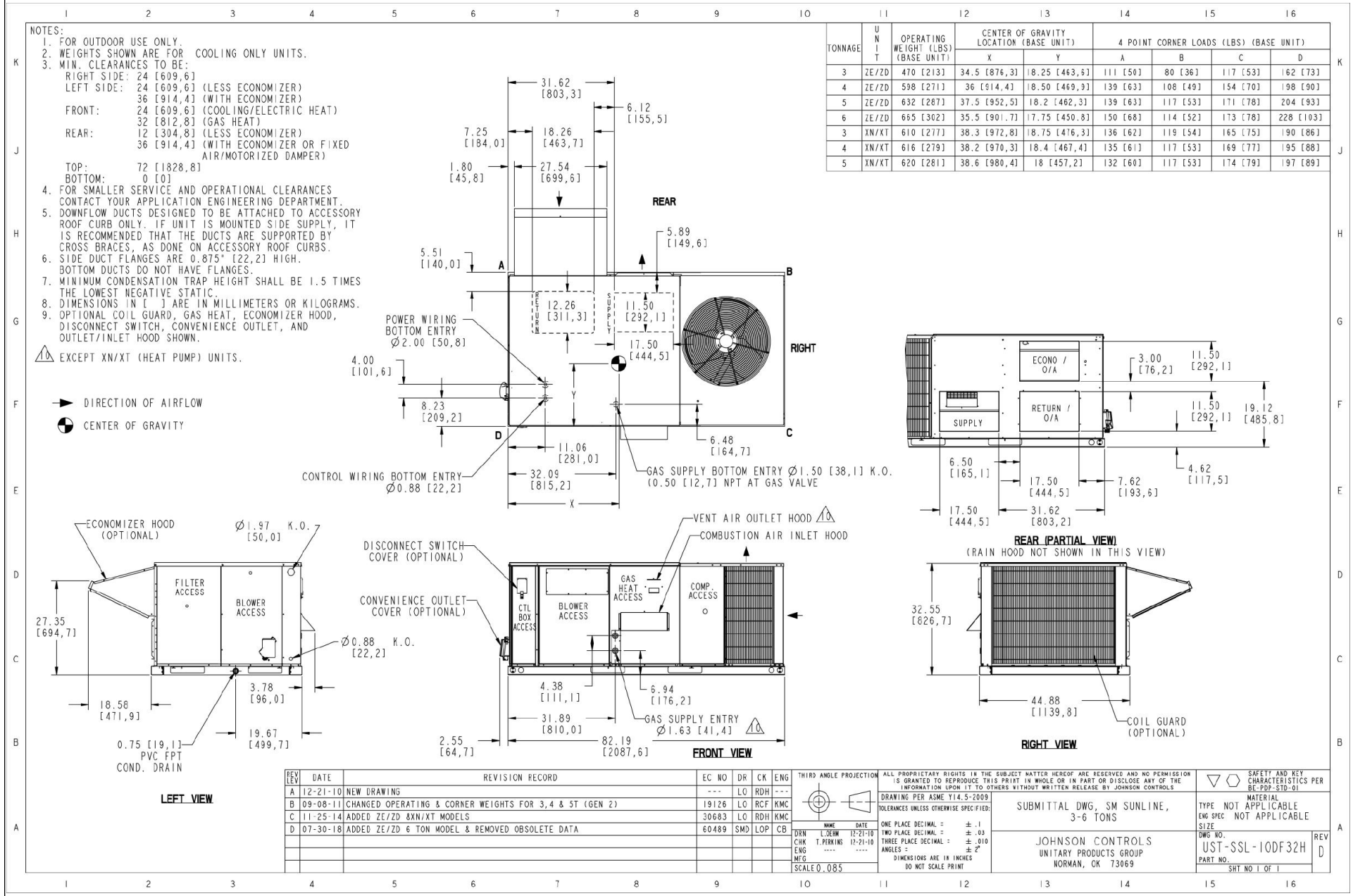
- ☐ 1RC0434 - Roof Curb - 14" High, Flat, Uninsulated, Full Perimeter (Shipped Knocked Down) (86.0 lbs)
- ☐ 1RC0442 - Roof Curb - 12" High, Flat, Uninsulated, Full Perimeter (Shipped Knocked Down) (78.0 lbs)
- ☐ 1RC0465 - Roof Curb - 8" High, Flat, Uninsulated, Full Perimeter (Shipped Knocked Down) (67.0 lbs)
- ☒ 1RD0410 - Barometric Relief Damper with Hood Kit (Downflow Unit or Duct Mo lbs)

Project Name: **Pleasant Hill Phase 2**

Unit Model #: **ZE048J07B4C1ACA2B2**

Quantity: **10** Tag #: **RTU-8,9,10,15,18,21,22,23,27,28**

Consolidated Drawing



Project Name: **Pleasant Hill Phase 2**

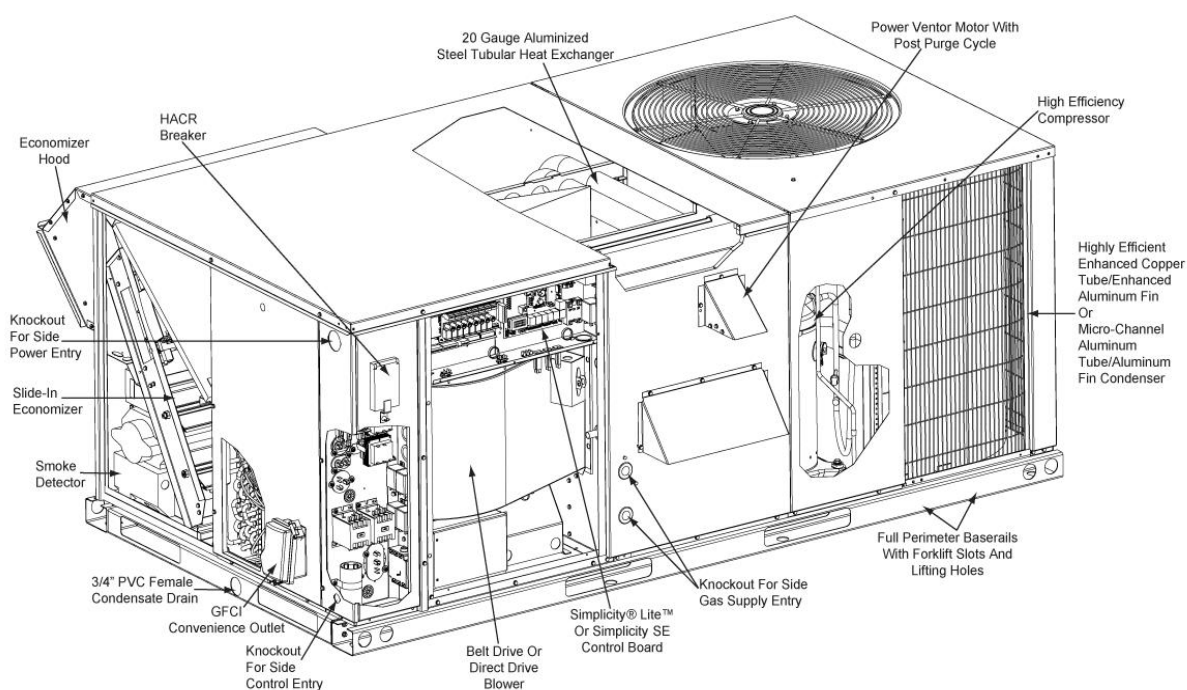
Unit Model #: **ZE048J07B4C1ACA2B2**

Quantity: **10** Tag #: **RTU-8,9,10,15,18,21,22,23,27,28**

Component Location

Component Location

Gas/Electric



Project Name: **Pleasant Hill Phase 2**

 Unit Model #: **ZE060J10B4C1ACA2B2**

 Quantity: **5** Tag #: **RTU-14,16,24,25,29**

 System: **ZE060J10B4C1ACA2B2**

Cooling Performance

Total gross capacity	61.1 MBH
Sensible gross capacity	45.4 MBH
Total net capacity	57.1 MBH
Sensible net capacity	41.4 MBH
Seasonal Efficiency (at ARI)	14.00 SEER
Efficiency (at ARI)	11.80 EER
Ambient DB temp.	95.0 °F
Entering DB temp.	80.0 °F
Entering WB temp.	67.0 °F
Leaving DB temp.	59.0 °F
Leaving WB temp.	57.3 °F
Leaving air temp dew point	56.20 °F
Power input (w/o blower)	4.28 kW
Sound power	82 dB(A)

Refrigerant

Refrigerant type	R-410A
Sys1	6 lbs 4 oz

Gas Heating Performance

Entering DB temp.	65 °F
Heating output capacity (Max)	80 MBH
Supply air	2000 CFM
Heating input capacity (Max)	100 MBH
Leaving DB temp.	102.0 °F
Air temp. rise	37.0 °F
SSE	80.0 %
Stages	1

Supply Air Blower Performance

Supply air	2000 CFM
Ext. static pressure	0.75 IWG
Addl. Unit Losses (Options/Accessories)	0.15 IWG
Blower speed	1212 RPM
Max BHP of Motor (including service factor)	1.73 HP
Duct location	Bottom
Motor rating	1.50 HP
Actual required BHP	1.26 HP
Power input	1.17 kW
Elevation	0 ft.
Drive type	BELT

Electrical Data

Power supply	460-3-60
Unit min circuit ampacity	14.1 Amps
Unit max over-current protection	20 Amps

Dimensions & Weight

Hgt	33 in.	Len	83 in.	Wth	45 in.
Weight with factory installed options	752 lbs.				

Clearances

Right	24 in.	Front	32 in.	Rear	12 in.
Top	72 in.	Bottom	0 in.	Left	24 in.

Note: Please refer to the tech guide for listed maximum static pressures



5 Ton

- Fraser-Johnston Units are Manufactured at an ISO 9001 Registered Facility and Each Rooftop is Completely Computer-Run Tested Prior to Shipment.

Unit Features

- Single Stage Cooling
- Single Stage Gas Stainless Steel
- 100 MBH Input
- Either Supply and/or Return can be Field Converted from Vertical to Horizontal Configuration without Cutting Panels.
- Full Perimeter Base Rails with Built in Rigging Capabilities
- Unit Cabinet Constructed of Powder Painted Steel, Certified At 750 Hours Salt Spray Test (ASTM B-117 Standards)
- Scroll Compressor
- Dry Bulb Economizer and Hood (No Barometric Relief Damper) with Economizer Fault Detection & Diagnostic (Meets ASHRAE 90.1-2013, IECC 2015, California Title 24, AMCA 511)
- 1.5 HP Standard Static Belt Drive Blower
- Solid Core Liquid Line Filter Driers
- 2" Pleated Filters (MERV 8)
- Replacement Filters: 2 - (15" x 20" x 1" or 2") and 1 - (14" x 25" x 1" or 2"). Unit accepts 1" or 2" wide filters.
- Short Circuit Current: 5kA RMS Symmetrical
- Through-the-Curb and Through-The-Base Utility Connections
- Single Point Power Connection
- Microchannel All Aluminum Condenser Coil, Copper tube/Aluminum fin Evaporator Coil
- Galvanized Steel Drain Pan
- Hinged & Tool Free Filter, Motor, and Electrical Access Panels

Standard Unit Controller: Smart Equipment Control Board

- Safety Monitoring - Monitors the High and Low-Pressure Switches, the Freezestats, the Gas Valve, if Applicable, and the Temperature Limit Switch on Gas and Electric Heat Units. The Unit Control Board will Alarm on Ignition Failures, Safety Lockouts and Repeated Limit Switch Trips.
- An Integrated Low-Ambient Control, Anti-Short Cycle Protection, Lead-Lag, Fan On and Fan off Delays, Low Voltage Protection, On-Board Diagnostic and Fault Code Display. Allows all units to operate in the cooling mode down to 0 °F outdoor ambient without additional components or intervention.

BAS Controller

- Smart Equipment Controller including Discharge Air, Return Air, and Outdoor Air Temperature Sensors. BACNet MS/TP, Modbus and N2 communication card.

Warranty

- One (1) Year Limited Warranty on the Complete Unit
- Five (5) Year Warranty - Compressors and Electric Heater Elements
- Fifteen (15) Year Warranty - Stainless Steel Heat Exchanger

Project Name: **Pleasant Hill Phase 2**

Unit Model #: **ZE060J10B4C1ACA2B2**

Quantity: **5** Tag #: **RTU-14,16,24,25,29**

System: **ZE060J10B4C1ACA2B2**

Additional Electrical Data

Power supply	460-3-60
Unit min circuit ampacity	14.1 Amps
Unit max over-current protection	20 Amps
Min Voltage	432 V
Max Voltage	504 V
Comp #1 RLA	7.8
Comp #1 LRA	52
Indoor Mtr Voltage	460-3-60
Indoor Mtr FLA	2.1
Outdoor Mtr Qty	1
OD Fan Mtr FLA (ea.)	4.4
Combustion Mtr Qty	1
Combustion Motor Voltage	208/230-1-60
Combustion Mtr FLA (ea)	0.8

Project Name: **Pleasant Hill Phase 2**

 Unit Model #: **ZE060J10B4C1ACA2B2**

 Quantity: **5** Tag #: **RTU-14,16,24,25,29**

 System: **ZE060J10B4C1ACA2B2**

Factory Installed Options

ZE060J10B4C1ACA2B2

Equipment Options	Option(s) Selected	
Product Category:	ZE	Single Packaged R-410A Air Conditioner 11.8 EER / 14.0 SEER
Nominal Cooling Capacity:	060	5 Ton Single Stage Cooling
Heat Type and Nominal Heat Capacity:	J10	Single Stage Gas Stainless Steel 100 MBH Input
Blower Option:	B	1.5 HP Standard Static Belt Drive Blower
Voltage:	4	460-3-60
Outside Air Option:	C	Dry Bulb Economizer and Hood (No Barometric Relief Damper) with Economizer Fault Detection & Diagnostic (Meets ASHRAE 90.1-2013, IECC 2015, California Title 24, AMCA 511)
Service Options:	1	
Sensor Options:	A	
Controls:	C	Smart Equipment Controller including Discharge Air, Return Air, and Outdoor Air Temperature Sensors. BACNet MS/TP, Modbus and N2 Communication Card.
Refrigeration:	A	Microchannel All Aluminum Condenser Coil, Copper tube/Aluminum fin Evaporator Coil
Additional Options:	2	2" Pleated Filters (MERV 8)
Cabinet Options:	B	Galvanized Steel Drain Pan Hinged & Tool Free Filter, Motor, and Electrical Access Panels

Field Installed Accessories

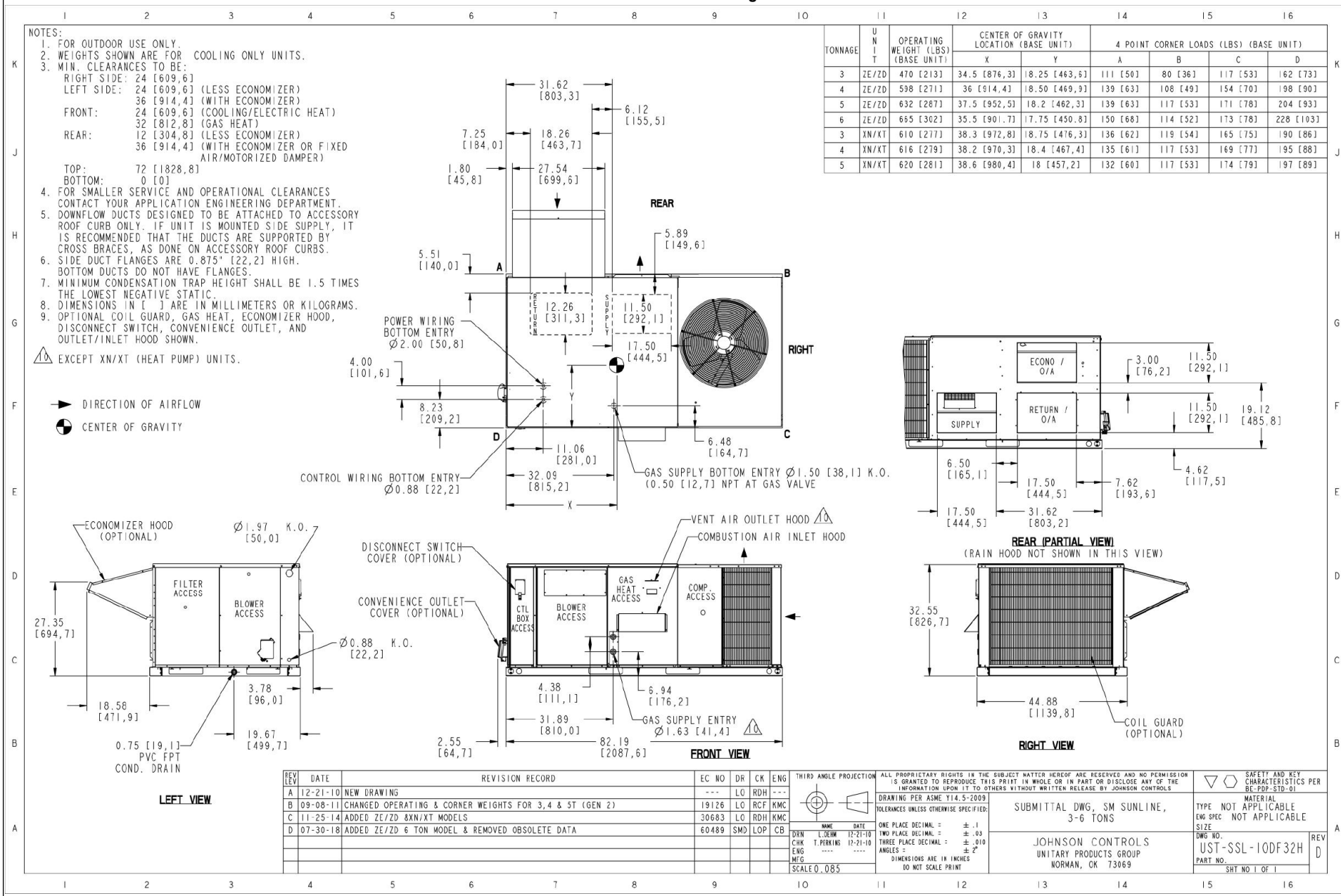
- | | | |
|--|--|---|
| <ul style="list-style-type: none"> <input type="radio"/> 1BD0401 - Burglar Bars (25.0 lbs) <input type="radio"/> 1CG0401 - Coil Guard (11.0 lbs) <input type="radio"/> 1CV0402 - Concentric Diffuser, Flush Mount, 18RD <input type="radio"/> 1CV0411 - Concentric Diffuser, Side Discharge, 18RD (55.0 lbs) <input type="radio"/> 1CV0419 - Concentric Diffuser, Specialty, 18X18 <input type="radio"/> 1FE0405 - Flue Extension Kit (25.0 lbs) | <ul style="list-style-type: none"> <input type="radio"/> 1GP0401 - Gas Piping Kit for Bottom Gas Supply Connection with External Shut-Off (includes: Internal gas pipe, fittings, gas cock & panel gaskets) (5.0 lbs) <input type="radio"/> 1HG0413 - Hail Guard Kit (51.0 lbs) <input type="radio"/> 1LN0406 - Low NOx Kit - Required to reduce the emission of nitrogen oxides below 40 nanograms per joule. <input type="radio"/> 1NP0440 - Natural Gas to Propane Conversion Kit (1-Stage) (1.0 lbs) | <ul style="list-style-type: none"> <input type="radio"/> 1RC0434 - Roof Curb - 14" High, Flat, Uninsulated, Full Perimeter (Shipped Knocked Down) (86.0 lbs) <input type="radio"/> 1RC0442 - Roof Curb - 12" High, Flat, Uninsulated, Full Perimeter (Shipped Knocked Down) (78.0 lbs) <input type="radio"/> 1RC0465 - Roof Curb - 8" High, Flat, Uninsulated, Full Perimeter (Shipped Knocked Down) (67.0 lbs) <input checked="" type="radio"/> 1RD0410 - Barometric Relief Damper with Hood Kit (Downflow Unit or Duct Mounted 6.0 lbs) |
|--|--|---|

Project Name: **Pleasant Hill Phase 2**

Unit Model #: **ZE060J10B4C1ACA2B2**

Quantity: **5** Tag #: **RTU-14,16,24,25,29**

Consolidated Drawing



Project Name: Pleasant Hill Phase 2

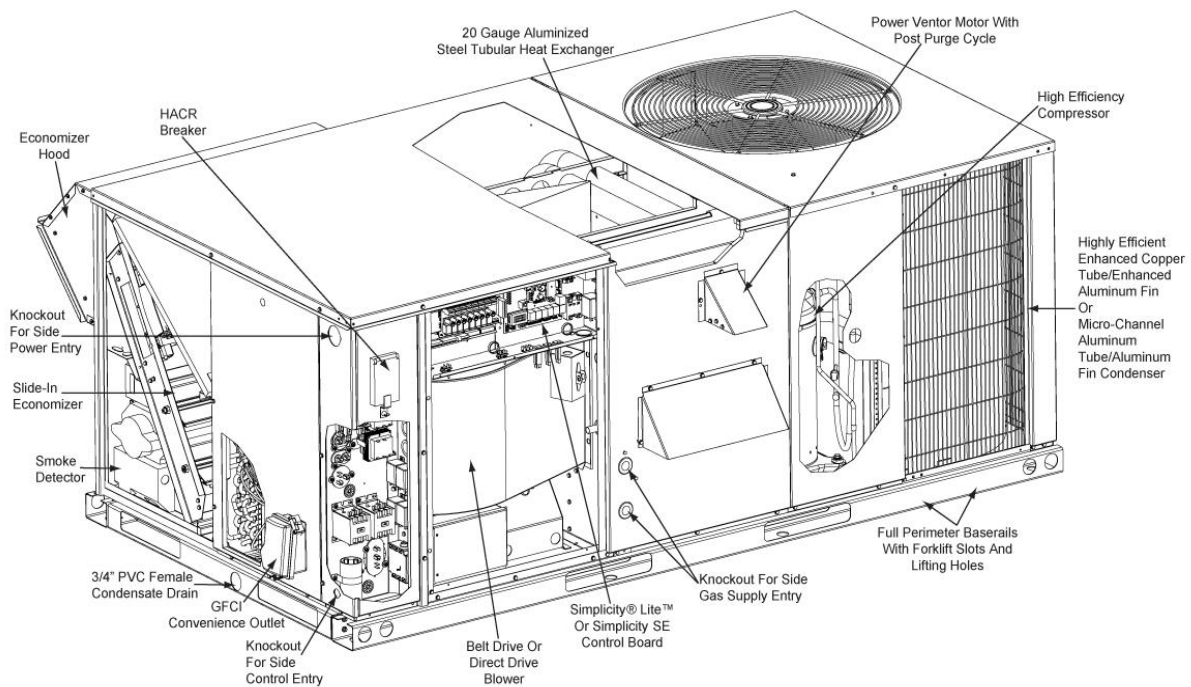
Unit Model #: ZE060J10B4C1ACA2B2

Quantity: 5 Tag #: RTU-14,16,24,25,29

Component Location

Component Location

Gas/Electric



Date

02/10/2022

Project Name

Pleasant Hill Phase 2

Project Number**Client / Purchaser**

Guide Specification Summary Page

Product Series	Models and Unit Tags	
3-6 Ton ReliaCore™ 100	ZE036J05B4C1ACA2B2	RTU-1,2,3,4,5,6,11,12,13,17,20
	ZE072J10D4C1ACA2B1	RTU-7
	ZE048J07B4C1ACA2B2	RTU-8,9,10,15,18,21,22,23,27,28
	ZE060J10B4C1ACA2B2	RTU-14,16,24,25,29